

## Taylor District Municipality

<b>1</b>	<b>General</b>
<p>Incorporated in 1958, Taylor has a total land area of 16.61 square km (2006 Census). By highway the District is 16 km south of Fort St. John on the north bank of the Peace River. Taylor is in the Peace River Regional District.</p>	

<b>2</b>	<b>Population Estimates</b>				<b>Age Distribution</b>				
<b>Annual Estimates</b>					<b>2011 Census</b>			<b>% Distribution, 2011 *</b>	
Year	Taylor	% Change Prev. Year	BC	% Change Prev. Year	Taylor	Male	Female	Taylor	BC
2007	1,403	n/a	4,309,632	n/a	All ages	715	660	100.0	100.0
2008	1,469	4.7	4,384,047	1.7	0 - 14	150	160	22.5	15.4
2009	1,483	1.0	4,459,947	1.7	15 - 24	105	95	14.2	12.6
2010	1,497	0.9	4,529,647	1.6	25 - 44	245	205	32.4	26.3
2011	1,501	0.3	4,573,321	1.0	45 - 64	175	160	25.1	30.0
					65 +	40	45	5.8	15.7

Source: Statistics Canada (as of July 1, includes estimate of Census undercount)

\* based on published totals, both sexes

**2006 Census Profiles can be found on our Website at <http://www.bcstats.gov.bc.ca/census.asp>**

<b>3</b>	<b>Selected Census Characteristics</b>						
			<b>Taylor</b>			<b>British Columbia</b>	
Characteristics	2001	2006	% Change	% Change	2001	2006	
Population	1,143	1,384	21.1	5.3	3,907,738	4,113,487	
Population (by citizenship)	1,140	1,385	21.5	5.3	3,868,875	4,074,385	
Non-immigrant	1,130	1,350	19.5	2.9	2,821,870	2,904,240	
Immigrant	15	35	133.3	10.8	1,009,820	1,119,215	
Labour force (15+ yrs.)	650	855	31.5	8.1	2,059,950	2,226,380	
Employees	560	710	26.8	9.2	1,715,600	1,873,050	
Self-employed	90	150	66.7	7.4	291,455	313,000	
Participation rate [ppt.=percentage points]	72.8%	83.9%	11.1 ppt.	0.4 ppt.	65.2%	65.6%	
Unemployment rate	4.6%	1.7%	-2.9 ppt.	-2.5 ppt.	8.5%	6.0%	
Total population 25 to 64 years	690	710	2.9	6.5	2,144,050	2,284,465	
No certificate, diploma or degree	290	165	- 43.1	- 40.1	471,470	282,200	
High school certificate or equivalent	140	230	64.3	27.7	462,925	591,275	
Apprenticeship/trades certificate or diploma	145	145	-	- 7.4	295,180	273,450	
College, CEGEP or other cert. or diploma	90	120	33.3	11.3	401,760	447,005	
University certificate, diploma or degree	20	50	150.0	34.7	512,715	690,535	
Bachelor's degree	30	35	16.7	23.0	282,800	347,715	
Census families	310	405	30.6	6.9	1,086,030	1,161,420	
Lone-parent families	35	75	114.3	4.0	168,420	175,165	
Households	435	525	20.7	7.1	1,534,335	1,643,150	
1-family households	300	405	35.0	6.1	1,012,925	1,074,850	
Multi-family households	10	-	- 100.0	18.4	35,050	41,510	
Non-family households	130	115	- 11.5	8.3	486,355	526,785	
Median Income (2000 & 2005)	\$ 21,621	\$ 30,053	39.0	12.5	\$ 22,095	\$ 24,867	
Males	\$ 24,608	\$ 45,952	86.7	9.0	\$ 28,976	\$ 31,598	
Females	\$ 19,995	\$ 21,064	5.3	14.0	\$ 17,546	\$ 19,997	
Median Family Income (2000 & 2005)	\$ 58,608	\$ 66,265	13.1	20.0	\$ 54,840	\$ 65,787	
Economic Families	315	410	30.2	6.5	1,044,850	1,112,810	
2001 Incidence, low income	-	6.2%	6.2 ppt.	-0.6 ppt.	13.9%	13.3%	
2006 Prevalence, low income	-	6.2%	6.2 ppt.	-0.6 ppt.	13.9%	13.3%	
Unattached persons, 15+	175	170	- 2.9	4.7	576,825	603,880	
Incidence, low income	23.4%	24.2%	0.8 ppt.	-1.4 ppt.	38.1%	36.7%	
Population in private hh.	1,140	1,385	21.5	5.1	3,785,270	3,978,215	
Incidence, low income	3.6%	8.7%	5.1 ppt.	-0.5 ppt.	17.8%	17.3%	
Dwellings	435	520	19.5	7.1	1,534,335	1,643,150	
Owned	355	395	11.3	12.5	1,017,485	1,145,045	
Rented	80	125	56.3	- 3.6	512,360	493,995	
Average gross rent	\$ 587	\$ 635	8.2	10.4	\$ 750	\$ 828	
Average owners' payments	\$ 748	\$ 907	21.3	17.1	\$ 904	\$ 1,059	
Avg. value, owned dwell.	\$ 105,577	\$ 190,713	80.6	81.5	\$ 230,645	\$ 418,703	

Source: Statistics Canada. Notes: incomes are for 2005 and 2000; rent/owner's payments are restricted to non-farm, non-reserve private dwellings.

## Taylor District Municipality

4		Labour Force by Industry (NAICS)					
		Taylor			BC	% Distribution, 2006	
Industry	2001	2006	% Change	% change	Taylor	BC	
Total labour force	655	860	31.3	8.1	100.0	100.0	
Industry - Not applicable	-	-	-	-26.6	-	1.5	
<b>All industries (Experienced LF)</b>	650	860	32.3	8.9	100.0	98.5	
111-112 Farms	25	20	-20.0	5.2	2.3	1.8	
113 Forestry and logging	-	25	-	-10.0	2.9	1.0	
114 Fishing, hunting and trapping	-	-	-	1.3	-	0.2	
1151/2 Support activities for farms	-	-	-	11.3	-	0.1	
1153 Support activities for forestry	-	10	-	-21.5	1.2	0.3	
21 Mining and oil and gas extraction	35	120	242.9	42.6	14.0	0.9	
22 Utilities	30	-	-100.0	-3.4	-	0.5	
23 Construction	110	65	-40.9	39.9	7.6	7.5	
31-33 Manufacturing	45	45	-	-2.7	5.2	8.5	
311 Food manufacturing	-	-	-	3.6	-	1.0	
321 Wood product manufacturing	40	20	-50.0	-16.1	2.3	1.7	
322 Paper manufacturing	-	20	-	-13.5	2.3	0.6	
41 Wholesale trade	30	40	33.3	11.6	4.7	4.1	
44-45 Retail trade	60	115	91.7	6.9	13.4	11.2	
441 Motor vehicle and parts dealers	10	20	100.0	9.0	2.3	1.1	
445 Food and beverage stores	10	35	250.0	8.4	4.1	2.9	
448 Clothing & clothing accessories	-	35	-	9.2	4.1	1.1	
452 General merchandise stores	20	10	-50.0	6.5	1.2	1.2	
48-49 Transportation & warehousing	125	90	-28.0	0.6	10.5	5.2	
51 Information and cultural industries	-	-	-	-5.3	-	2.6	
52 Finance and insurance	15	20	33.3	4.5	2.3	3.8	
53 Real estate & rental/leasing	-	-	-	22.1	-	2.3	
54 Prof'sonal, scientific & tech. serv.	25	100	300.0	18.6	11.6	7.3	
55 Mgmt. of companies/ent'prises	-	-	-	126.6	-	0.1	
56 Admin+support, waste mgmnt srv.	10	-	-100.0	20.4	-	4.4	
61 Educational services	20	55	175.0	9.2	6.4	6.9	
62 Health care and social assistance	35	35	-	6.5	4.1	9.6	
71 Arts, entertainment and recreation	20	20	-	11.3	2.3	2.3	
72 Accommodation and food services	40	35	-12.5	7.7	4.1	8.1	
721 Accommodation services	15	30	100.0	2.5	3.5	1.7	
722 Food services & drinking places	30	10	-66.7	9.2	1.2	6.4	
81 Other services (excl. public admin.)	10	30	200.0	11.8	3.5	4.9	
91 Public administration	35	15	-57.1	-2.0	1.7	5.0	
Special Aggregations							
Agriculture, Food and Beverage	25	20	-20.0	5.8	2.3	2.9	
Fishing and Fish Processing	-	-	-	-3.3	-	0.5	
Logging and Forest Products	45	75	66.7	-14.7	8.7	3.7	
Mining and Mineral Products	35	120	242.9	17.1	14.0	2.1	

Source: Statistics Canada. Industry according to NAICS version used in each census. Unpublished data.

5		Business Locations- Number of Firms by Employment Size Range								
		Firms with no employees		Firms with employees		% change	Peace River RD			
		Peace River RD	BC	Peace River R	BC	Peace River RD	1 to 19	20 to 49	50-199	200 Plus
2008		3,025	185,879	3,987	175,003	-	3,582	255	129	21
2009		3,018	186,541	3,879	176,124	-2.7	3,468	272	119	20
2010		2,828	194,349	3,469	175,913	-10.6	3,120	229	100	20
2011		2,809	195,290	3,411	173,589	-1.7	3,052	235	108	16

Source: Business Register, Statistics Canada. In some areas, boundary changes/geocoding changes may cause large changes.

6		Municipal Residential Taxes and Charges on a Representative House					
		Taylor					
Year	House Value		Taxes & Charges		Index (2008=100.0)		
	\$	% change	\$	% change			
2008	183,068		1,823		100	100	
2009	184,056	0.5	1,858	1.9	100	100	
2010	208,060	13.0	2,080	12.0	114	114	
2011	208,098	0.0	2,127	2.3	114	114	
2012	204,176	-1.9	2,183	2.6	112	112	

Source: Ministry of Community, Sport & Cultural Development [http://www.cd.gov.bc.ca/lgd/infra/statistics\\_index.htm](http://www.cd.gov.bc.ca/lgd/infra/statistics_index.htm) (No RD level figures)

## Taylor District Municipality

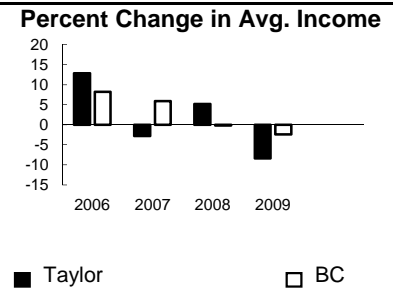
7	Values of Building Permits									
	Residential				Non-Residential			Total		Year
	Number of Units		Value \$'000		Value \$'000			Value \$'000		
Taylor	BC	Taylor	BC	Taylor	BC	Taylor	BC			
2007	10	40,932	816	8,611,723	725	3,932,968	1,541	12,544,691	2007	
2008	4	30,110	1,007	6,899,289	480	3,677,866	1,487	10,577,155	2008	
2009	2	18,607	487	4,491,075	1,010	3,138,810	1,497	7,629,885	2009	
2010	28	28,984	3,122	6,705,888	260	3,017,921	3,382	9,723,809	2010	
2011	5	25,745	519	6,113,406	75	3,136,361	594	9,249,767	2011	

Source: Statistics Canada

Note: Detailed non-residential permits data can be found on our Website: www.bcstats.gov.bc.ca

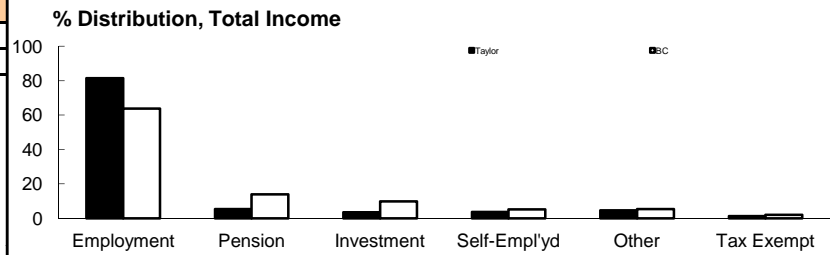
A dash can indicate a nil report, a value of less than \$500, or non-reporting. P indicates 'preliminary'.

8	Personal Taxation Statistics					Percent Change in Avg. Income		
	Total Income of All Returns							
	All Returns (number)		Average Income (\$)		% Change avg. income			
Year	Taylor	BC	Taylor	BC	Taylor	BC		
2005	1,210	3,154,090	42,469	35,601	n/a	n/a		
2006	1,210	3,165,750	47,925	38,523	12.8	8.2		
2007	1,270	3,287,750	46,590	40,802	-2.8	5.9		
2008	1,360	3,383,640	48,987	40,736	5.1	-0.2		
2009	1,400	3,406,860	44,870	39,754	-8.4	-2.4		



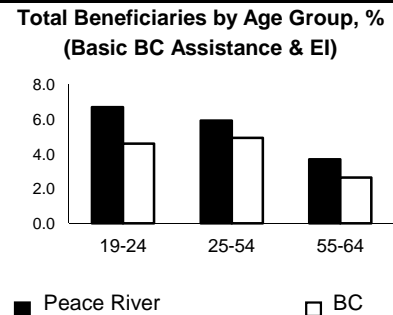
Taxation data available at: <http://www.bcstats.gov.bc.ca/data/dd/income.asp>

Source of Total Income 2009				% Distribution, Total Income					
	Taylor		BC						
	\$Thousands	% of Total		% of Total					
Employment	51,171	81.5	63.7						
Pension	3,358	5.3	13.8						
Investment	2,219	3.5	9.8						
Self-Employed	2,332	3.7	5.3						
Other	2,957	4.7	5.3						
Tax Exempt	775	1.2	2.0						
Total	62,818	100.0	100.0						



Source: Canada Revenue Agency. Areas are defined by postal codes and may not match municipal boundaries.

9	Dependency on the Safety Net						Total Beneficiaries by Age Group, % (Basic BC Assistance & EI)		
	Percentage of Population by Age Receiving Benefits - September 2009								
	Age Group	BC Basic* Income Assistance Recipients (%)		Employment Insurance Beneficiaries (%)		Total of BC Basic Income Assistance & EI Beneficiaries (%)			
Peace River		BC	Peace River	BC	Peace River	BC			
Under 19	2.5	2.7							
19-24	2.0	2.1	4.7	2.6	6.7	4.6			
25-54	1.6	1.9	4.3	3.1	5.9	4.9			
55-64	0.6	0.7	3.1	2.0	3.7	2.6			
19-64	1.5	1.7	4.2	2.8	5.7	4.4			



\* On temporary assistance only. Excluded are those on Continuous Assistance, aboriginals living on reserve, seniors/OAS, & children living with relatives.

Source: BC Stats (using administrative files from the BC Ministry of Housing & Social Development, and Human Resources & Social Development Canada)

Note: EI Beneficiaries reports now include regular, fishing and employment benefits, work sharing and support measures. The reports exclude sickness, maternity and parental benefits.

10	Business Formations and Failures								
	Incorporations			Bankruptcies					
	Number		Year	Ft St John		Northeast DR		BC	
Taylor	BC	Business		Consumer	Business	Consumer	Business	Consumer	
2007	4	34,036	2005	8	33	n.a.	n.a.	786	8,168
2008	4	30,085	2006	4	27	9	71	585	7,020
2009	2	26,431	2007	3	34	10	78	470	6,651
2010	5	30,305	2008	0	45	7	82	454	7,293
2011	2	30,844	2009	1	44	4	125	380	10,639

Source: BC Ministry of Finance

Source: Office of the Superintendent of Bankruptcy, Government of Canada

Incorporations are counted in municipality of the registered office address which may differ from the actual business location.

Note: Bankruptcy is by urban postal code forward sortation area and is counted where it is filed.